



地址:大连市旅顺经济技术开发区广源街32号 邮编:116045
电话:(+86) 411-39551677 传真:(+86) 411-82766038 网址: www.ctcinsulator.com 邮箱: info@ctcinsulator.com
Address: 32 Guangyuan Street, Lvshun Economic and technological Development Zone, P.R.China. Postcode:116045
Tel: (+86)411-39551677 Fax: (+86)411-82766038 Website: www.ctcinsulator.com Email: info@ctcinsulator.com
US Office: 363 E Westfield Blvd, Indianapolis, IN 46220; Tel: (+1) 317-515-0887

大连鑫森电器制造股份有限公司
CTC INSULATOR CO., LTD.

/ www.ctcinsulator.com / ctcinsulator.org /

简介 About Us

大连鑫垚电器制造股份有限公司（简称CTC）坐落于大连市旅顺经济技术开发区，占地面积8700平方米，建筑面积6400平方米，现有员工约100人。公司主要生产以下产品：11kV—1000kV复合悬式绝缘子；11kV-230kV复合支柱绝缘子；11kV-800kV复合电站支柱绝缘子；800kV及以下复合空心绝缘子；25kV复合铁路绝缘子；瓷芯复合支柱绝缘子；环氧树脂套管；以及根据客户要求设计生产的产品。

公司设有独立的设计研发机构，拥有经验丰富的专家团队及技术研发人员，凭借多年来对绝缘子及相关电力产品的专业经验及对国内外电力市场需求的专注研究，将传统产品与新技术新材料有机结合，使我们的技术研发朝着绿色智能方向发展，近年来研制开发了11kV-800kV瓷芯合成绝缘子，24kV、36kV环氧树脂套管等产品，已出口多个国家和地区，获得客户认可和好评。

公司建立和实施了ISO9001质量保证体系并获得认证；拥有着先进的生产设备和实验设备，健全完善的检测手段，公司可以为用户生产和检测如GB, IEC, BS, ANSI和AS等国内和国际不同标准及不同客户要求的产品。经过多年努力，我们的市场目前已覆盖全球超过20多个国家和地区。

“为每一位客户提供质量可靠的产品和专业的技术及服务”是CTC一贯追求的目标。我们将秉承着“不断创新，持续研发，诚信合作”的宗旨，与客户和供应商携手共创美好未来！

CTC Insulator Co., Ltd. is located in Dalian Lvshun Economic and Technological Development Zone, which occupies an area of 8700 square meters with a floor space of 6400 square meters. Currently, we have one hundred employees and manufacture the following products: 11kV—1000kV composite long rod insulators, 11kV—230kV composite line post insulators, 11kV—800kV composite station post insulators, up to 800kV composite hollow insulators, 25kV composite railway insulators, hybrid post insulators, M.V. epoxy resin bushings, and many other composite products as per customer specification.

CTC has an independent R & D Dept. Our technical and engineering personnel have many years of experience in their respective fields of expertise. Based on the many years of professional experience of insulators and related electrical products, our team focuses on developments in the domestic and international power market. With a combination of traditional and new materials, we are able to develop suitable products for green and smart grid projects. CTC developed and supplied a number of customers with 11kV-800kV hybrid post insulators and 24kV and 36kV epoxy resin bushings. These products were designed to customer requirements and tested to international standards.

We maintain a Quality Management System as per ISO9001. With advanced production equipment and modern test equipment, we produce and test reliable products to international standards such as IEC, ANSI, BS, DIN, AS, and other customer requirements.

We export to more than 20 countries globally. The aim of CTC is to be a supplier of reliable quality electrical products and to provide professional technical and commercial services to all our customers. We will achieve this by having an innovative spirit, continuous development, conducting business in good faith and by maintaining a close relationship with our customers and suppliers.



产品种类和范围 Product Variety & Range

复合空心绝缘子

Composite Hollow Insulator

用途：适用于避雷器，断路器，电容器，互感器，变压器，电缆终端和GIS等高压电气设备；
Usage: surge arrester, circuit breaker, capacitor, instrument transformer, power transformer, cable termination & GIS, etc;

额定电压：11kV-800kV
Rated System Voltage: 11kV—800kV

额定弯曲负荷：4-25kN
Specified Cantilever Load (SCL): 4-25kN

颜色：棕色，灰色或客户要求
Color: Brown, Gray or Customer's requirement

适用标准：GB, IEC 或客户要求
Applicable Standard: GB, IEC or Customer's requirement;

芯管：环氧玻璃纤维缠绕管或者瓷管
Tube: Fiberglass core and Porcelain core;



复合电站支柱绝缘子

Composite Station Post Insulator

额定电压：11kV-800kV

Rated System Voltage: 11kV—800kV

额定弯曲负荷：2-25kN

Specified Cantilever Load (SCL): 2—25kN

颜色：棕色，灰色 或客户要求

Color: Brown, Gray or Customer's requirement

适用标准：GB,IEC, ANSI或客户要求

Applicable Standard: GB, IEC, ANSI or Customer's requirement;

芯棒：环氧玻璃纤维引拔芯棒或者瓷芯

Core: Fiberglass core and Porcelain core

端部金具材质：热镀锌钢，铝铁合金，不锈钢

Material of Fitting: H.D.G steel, Aluminum iron alloy, Stainless steel;



复合线路支柱绝缘子（针式）

Composite Line Post Insulator (Pin Post)

额定电压：11kV-230kV

Rated System Voltage: 11kV—230kV

额定弯曲负荷：1-20 kN

Specified Cantilever Load (SCL): 1—20 kN

颜色：棕色，灰色 或客户要求

Color: Brown, Gray or Customer's requirement

适用标准：GB,IEC, ANSI, CAN, BS, AS 或客户要求

Applicable Standard: GB, IEC, ANSI, CAN, BS, AS or Customer's requirement;

芯棒：环氧玻璃纤维引拔芯棒或者瓷芯

Core: Fiberglass core and Porcelain core

端部金具材质：热镀锌钢，铝铁合金，不锈钢

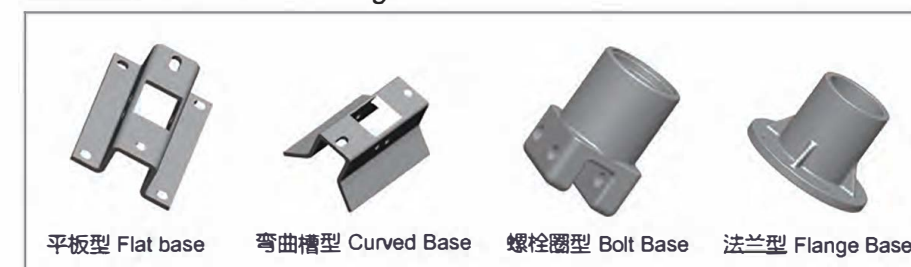
Material of end fitting: H.D.G steel, Alumin iron alloy, stainless steel;



顶端金具 Top End Fitting



底端金具 Bottom End Fitting



复合铁路绝缘子 Composite Railway Insulator

额定电压 : 25kV
Rated System Voltage: 25kV

产品适用范围 : 耐张 : 70kN—160kN; 支撑 : 4kN—20kN。
Product Scope: Tension: 70kN—160kN; Supporting: 4kN—20kN.

颜色 : 棕色, 灰色或客户要求
Color: Brown, Gray or Customer's requirement

适用标准 : GB, IEC 或客户要求
Applicable Standard: GB, IEC or Customer's requirement

芯棒 : 环氧玻璃纤维引拔芯棒或者瓷芯
Core: Fiberglass core and Porcelain core



M.V.环氧树脂套管 M.V. Epoxy Resin Bushing

最大系统电压 : 24kV, 36kV
Max. System Voltage: 24kV, 36kV

额定电流 : 300A-1600A
Rated System Current: 300A-1600A

颜色 : 灰色 或客户要求
Color: Gray or Customer's requirement

适用标准 : IEC 或客户要求
Applicable Standard: IEC or Customer's requirement



复合长棒绝缘子 (悬式/耐张) Composite Long Rod Insulator (Suspension / Tension)

额定电压: 11kV-1000kV
Rated System Voltage: 11kV—1000kV

额定机械负荷: 45kN-400kN
Specified Mechanical Load (SML): 45kN—400kN

颜色 : 棕色, 灰色 或客户要求
Color: Brown, Gray or Customer's requirement

适用标准 : IEC, ANSI, CAN, BS, AS 或客户要求
Applicable Standard: GB, IEC, ANSI, CAN, BS, AS, or Customer's requirement



端部金具 End Fittings



研发和质量保证 R&D and Quality Assurance

- 拥有强大的自主创新能力
Possessed with profound innovation capacity
- 自主知识产权
Independent intellectual property rights
- 结合传统，持续的改进和创新
Insistent on developing and innovating based on tradition
- 拥有经验丰富的专家和技术人员，曾参与制定绝缘子国家标准
Richly experienced technical group equipped with engineering and expertise that participates in formulation of national standards for insulators
- 先进的生产和试验设备
Advanced production equipment and modern testing facilities
- 坚持以客户为导向的质量管理
Customer-oriented quality management base on ISO 9001
- 严格的控制程序及措施用于设计、采购、生产、检验和售后服务
Strict control program, system and measures for design, procurement, manufacturing, inspection, test and after-sales service
- 可靠的原材料供应商，完善的原材料入厂检验
Reliable vendors of raw materials with complete incoming inspections for raw materials
- 所有产品都要经过严格检测，以保证其性能良好的交付给客户
All insulators are tested during and at the end of the manufacturing process to ensure that every customer can rely on the high quality of our product
- 公司能自主进行设计、型式及研发相关的试验
CTC is able to conduct most of the usual design and type tests, acceptance tests, and tests for R&D activities.



生产设备 Production Equipment



300T硅橡胶注射机
YL-AB300L Silicone rubber injection machine



500T硅橡胶注射机
YL-AB500L Silicone rubber injection machine



硅橡胶平板硫化机
Silicone rubber molding machine



硅橡胶铸压机
Silicone rubber molding press machine



压接机
Metal fittings compression machine



650T硅橡胶注射机
DKM-RA650 Silicone rubber injection machine



环氧树脂真空混料罐
Epoxy resin vacuum mixing equipment



激光打标机
Laser label-printed machine

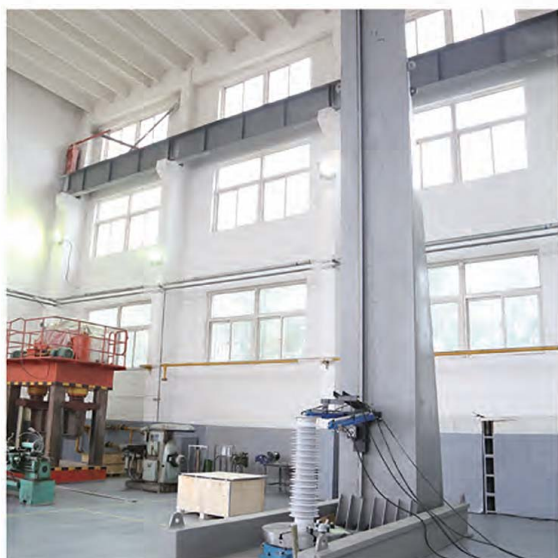


环氧树脂自动压力凝胶成型机
HAGV model APG shaping mill for epoxy resin machine



法兰压接机
Flange crimping machine

实验设备 Test Equipment



弯扭试验机
Bending and torsion testing machine



卧式拉力试验机
Horizontal tensile testing machine



漏电起痕实验设备
Tracking and erosion resistance test equipment



工频实验操作台
Operation table of power frequency test



陡波冲击电压实验设备
Steep front impulse voltage test equipment



万能材料试验机
Universal testing machine



硫化仪
Vulcanizer



局放检测设备
Partial discharge inspection instrument



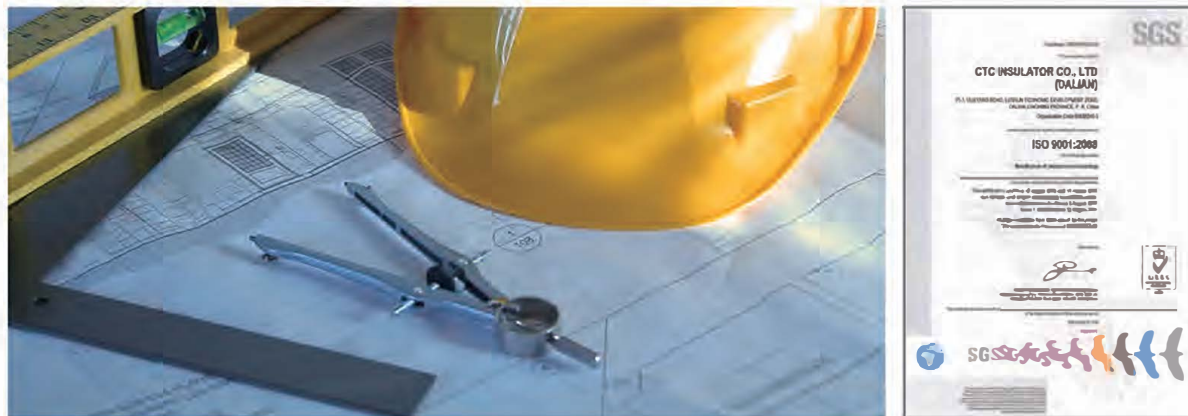
SF6泄漏实验设备
SF6 leakage testing machine



UV老化试验设备
UV aging testing machine

CTC研发和质量保证 CTC R&D and Quality Assurance

- 拥有强大的自主创新能力
Equipped with profound innovation capacity ;
- 自主知识产权
Independent intellectual property rights;
- 结合传统，持续的改进和创新
Insistent on development and innovation based on tradition;
- 拥有经验丰富的专家和技术人员，曾参与制定绝缘子国家标准
Experienced technical group with profound engineering and expertise which participates in formulation of national standards for insulators;
- 先进的生产和试验设备
Advanced production equipment and modern testing facilities;
- 坚持以客户为导向的质量管理
Customer--oriented quality management base on ISO 9001;
- 严格的控制程序及措施用于设计、采购、生产、检验和售后服务
Strict quality control program with systems and measurements for design, procurement, manufacturing, inspection, testing, and after-sales service;
- 可靠的原材料供应商，完善的原材料入厂检验
Reliable vendors of raw material, complete inspection process for raw material;
- 所有产品都要经过严格检测，以保证其性能良好的交付给客户
All insulators are tested during and at the end of the manufacturing process to ensure that every customer can rely on the high quality of our product;
- 公司能自主进行设计、型式及研发相关的试验
CTC is able to conduct most of the usual design & type tests as well as acceptance tests and tests for R&D activities.



交流合作 Communication & Cooperation

经过多年努力，CTC的产品已经远销亚洲、中东、非洲、南美，澳大利亚，欧洲等20多个国家和地区，并获得多个国家和地区电力公司的认可，成为其合格资质的供应商。

After years of efforts, CTC insulators have been exported to more than 20 countries and regions worldwide among several national and regional power companies as qualified suppliers.

